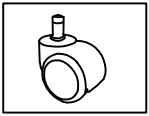


OFFICE CHAIR ASSEMBLY INSTRUCTION

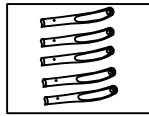


THANK YOU FOR PURCHASING OFFICE CHAIR

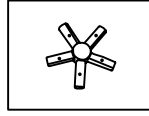
PARTS LIST



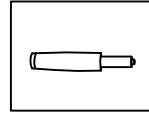
A 5×Wheels



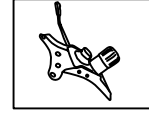
B1 5×Split base tube



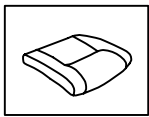
B2 1×Central
base tube



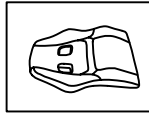
C1 1×gas lift



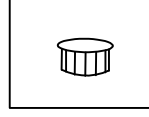
D 1×mechanism



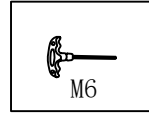
E1×seat



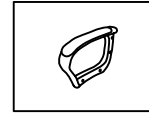
F 1×back



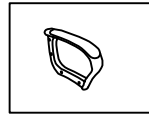
G 8×Plastic caps



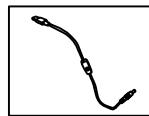
H 1×allen key
M6



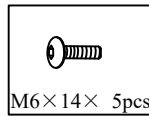
I1 Left armrests



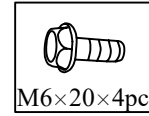
I2 Right armrests



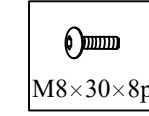
P31×Extension cord



M6×14× 5pcs
Z2 5×screws



M6×20×4pcs
Z8 4×screws

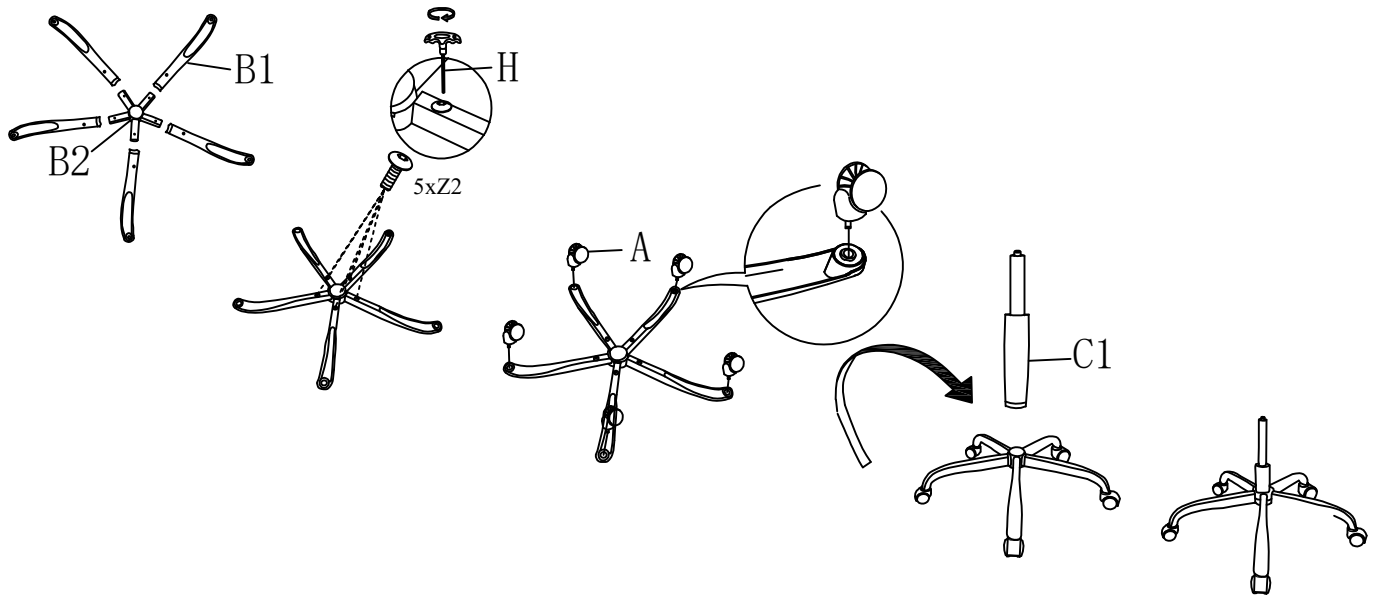


M8×30×8pcs
Y11 8×screws

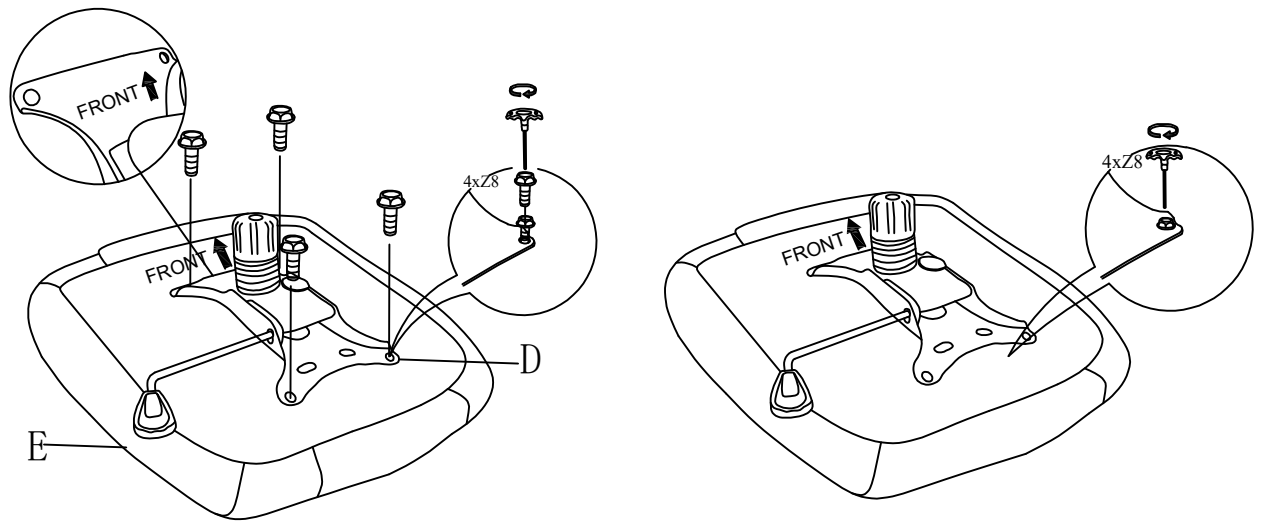
WARNING

- Do not stand in this chair or use the chair as a step ladder use it as chair only.
- This chair is designed for one person to use at a time.
- This chair is designed for one person weighing up to 250lbs(113kgs).
- Do not use this chair unless all bolts, screws and knobs are firmly secured.
- Check all bolts,screws and knobs every 90days. Tighten if any are loose.
- Failure to follow these instructions may result in serious injury or death of yourself and people around you.
- Some of the part are heavy and/or has shape edge, please install it carefully to avoid hurt you and people around you.

1

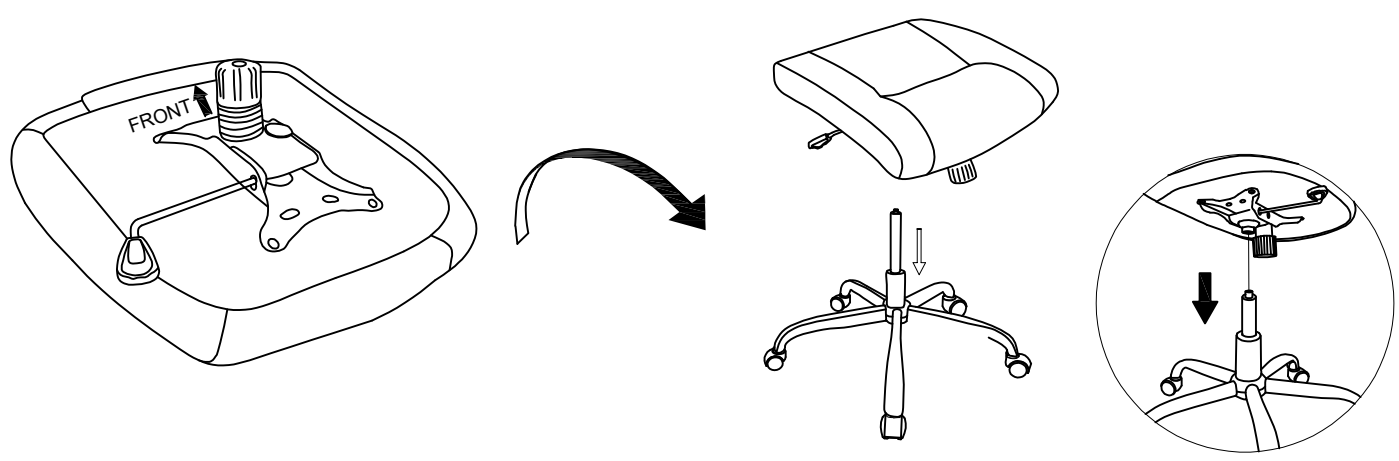


2

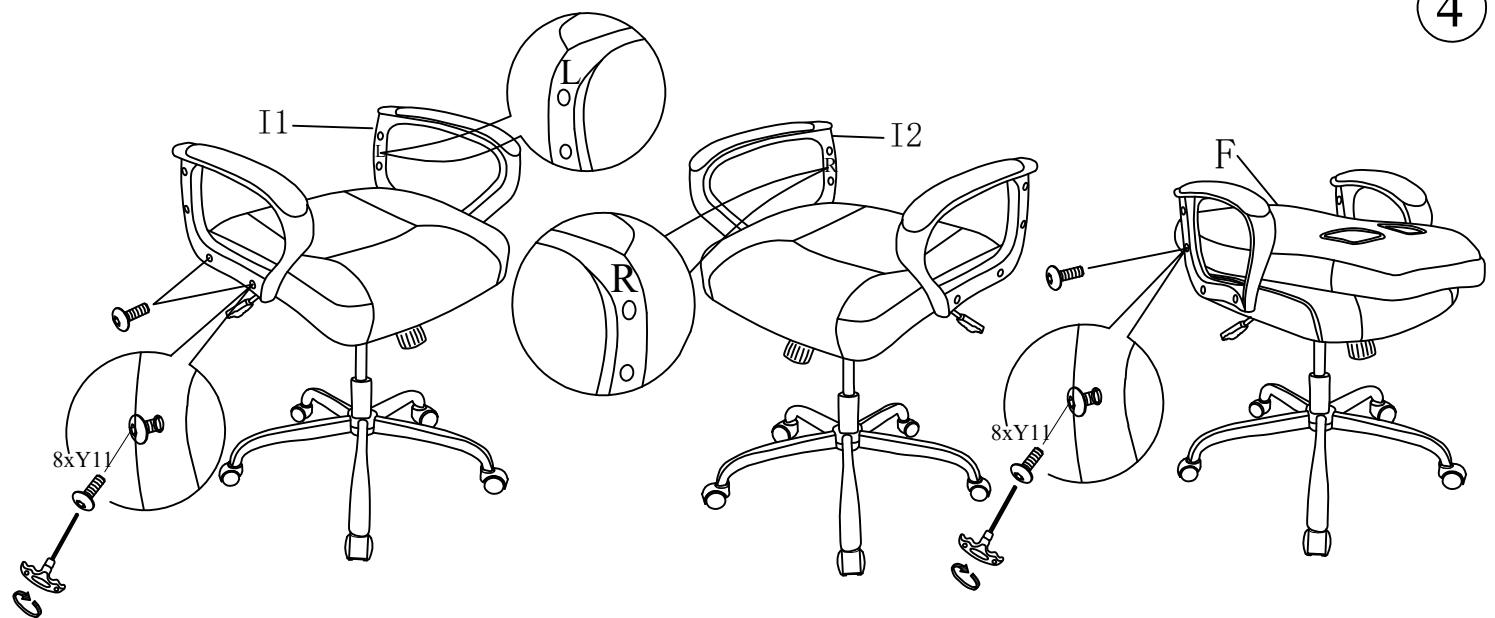


Attention: All the screws in, and then tighten them

3

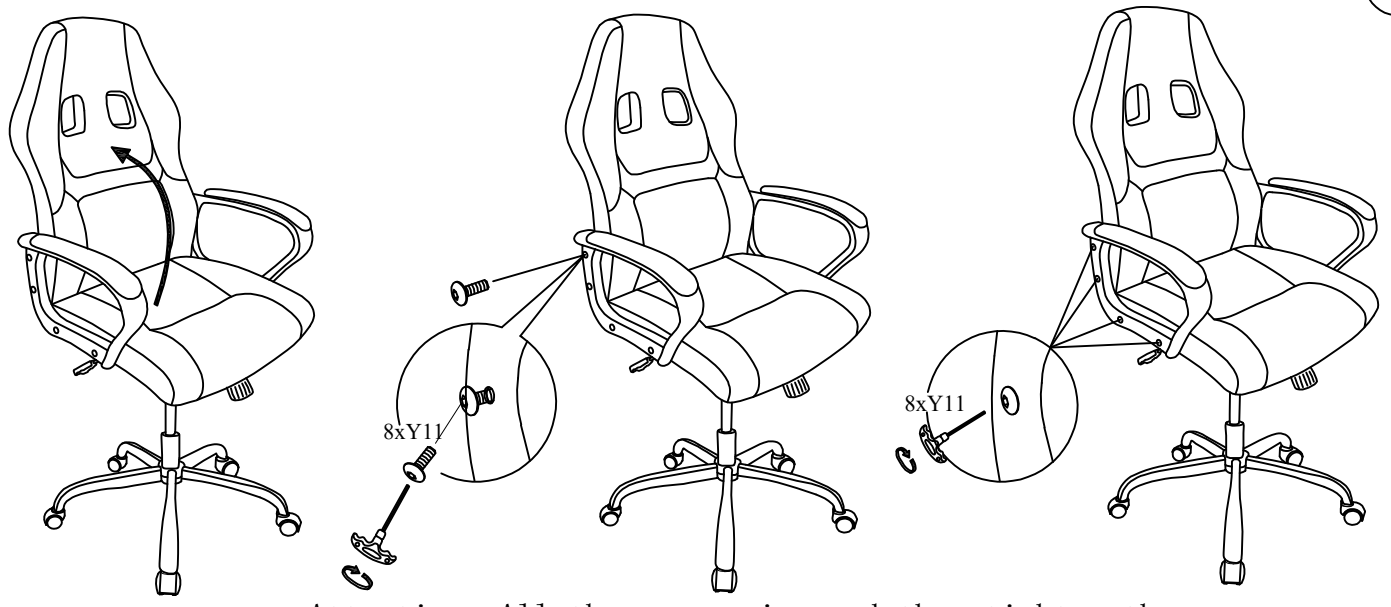


4



Attention: All the screws in, and then tighten them

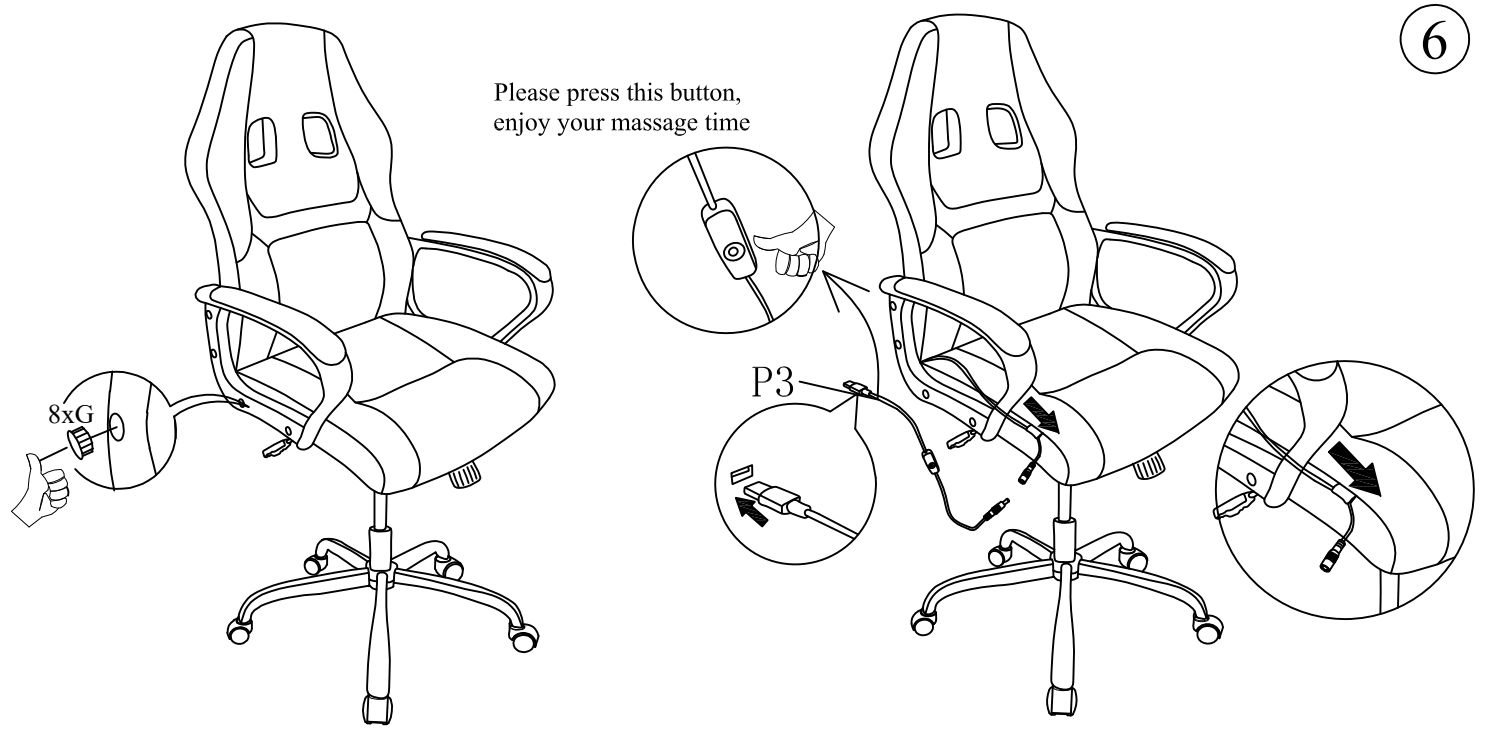
5



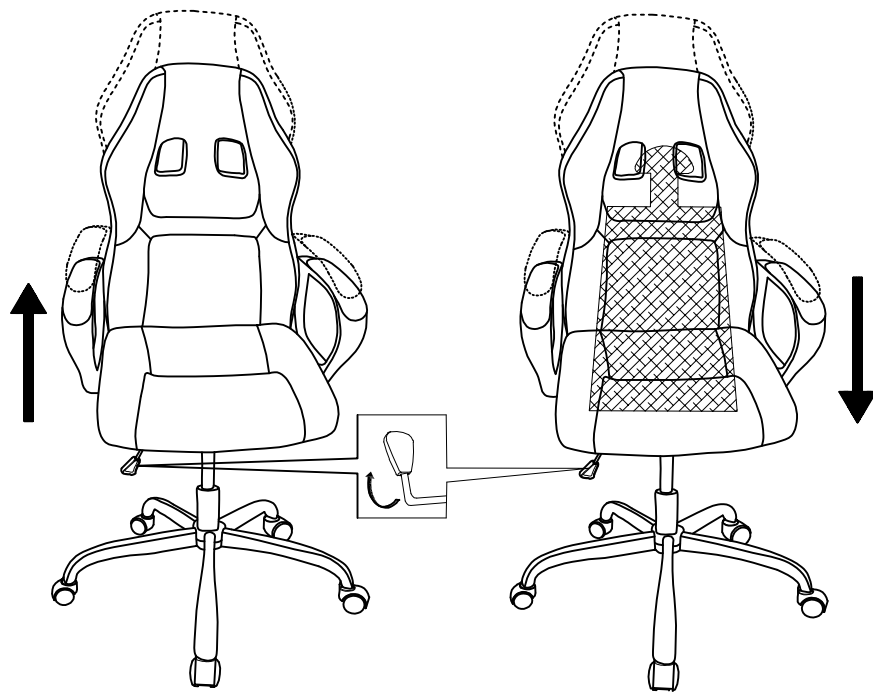
Attention: All the screws in, and then tighten them

6

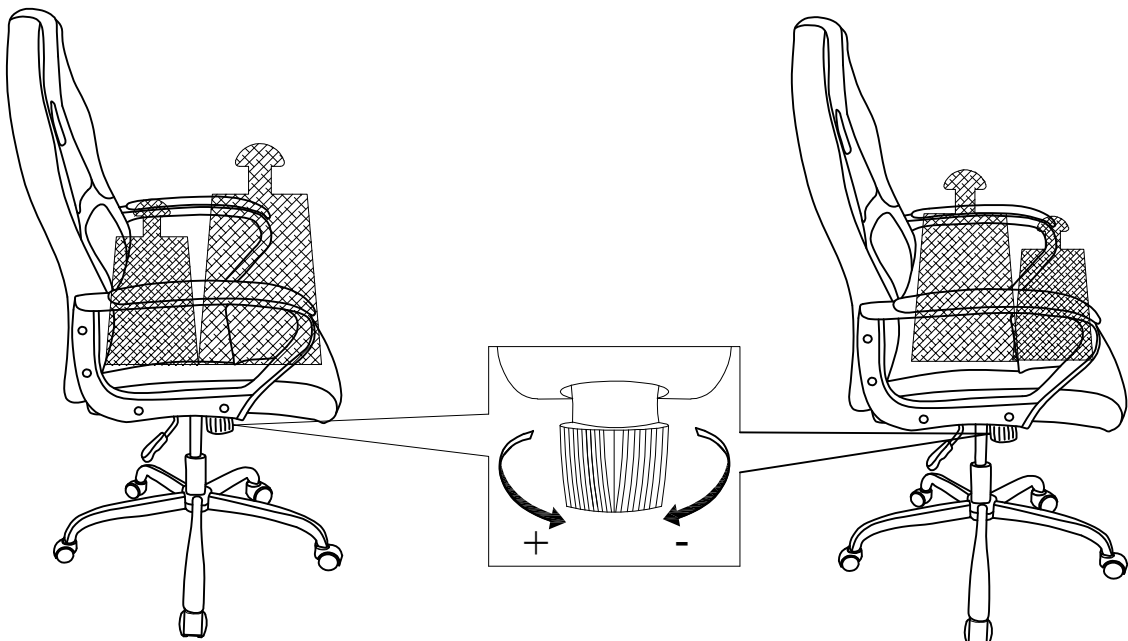
Please press this button, enjoy your massage time



7

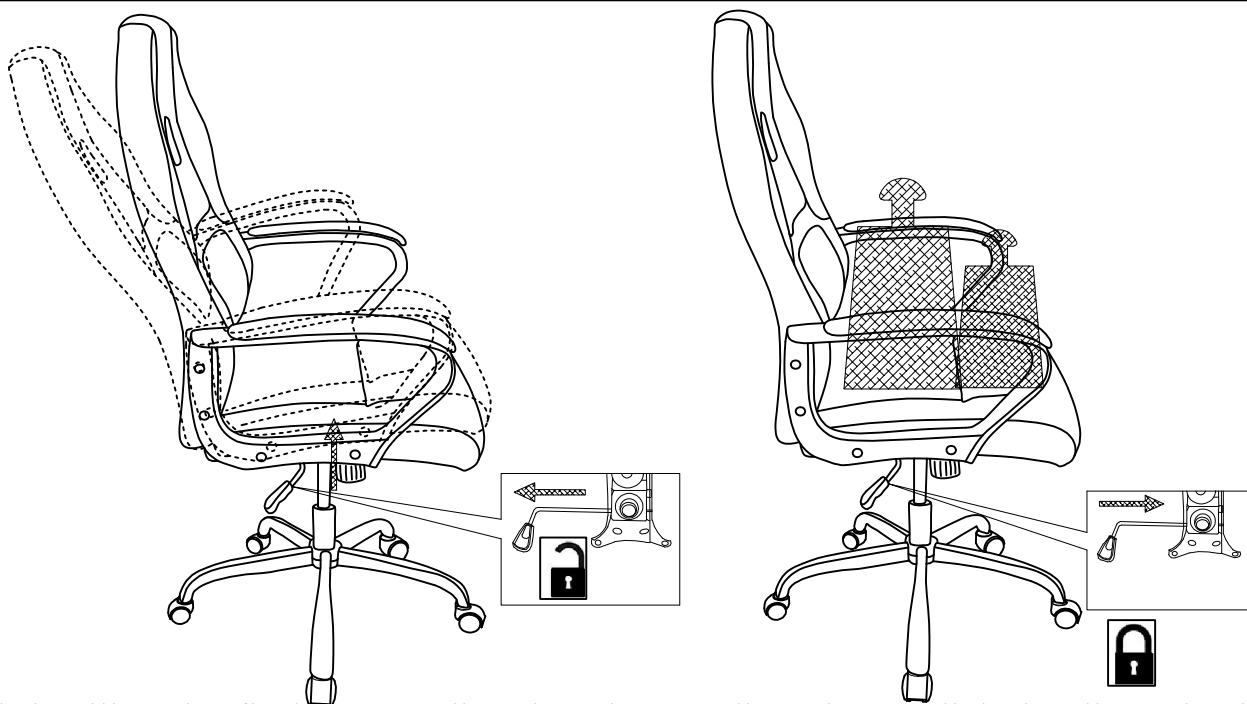


8



There's a circle under the chair if you turn it, it will lessen the force required to the lean back in the chair

9



This chair will not lay flat but can recline, in order to recline, please pull the handle on the side out